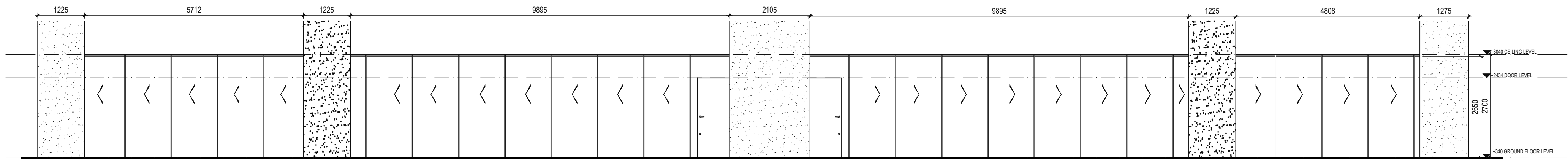
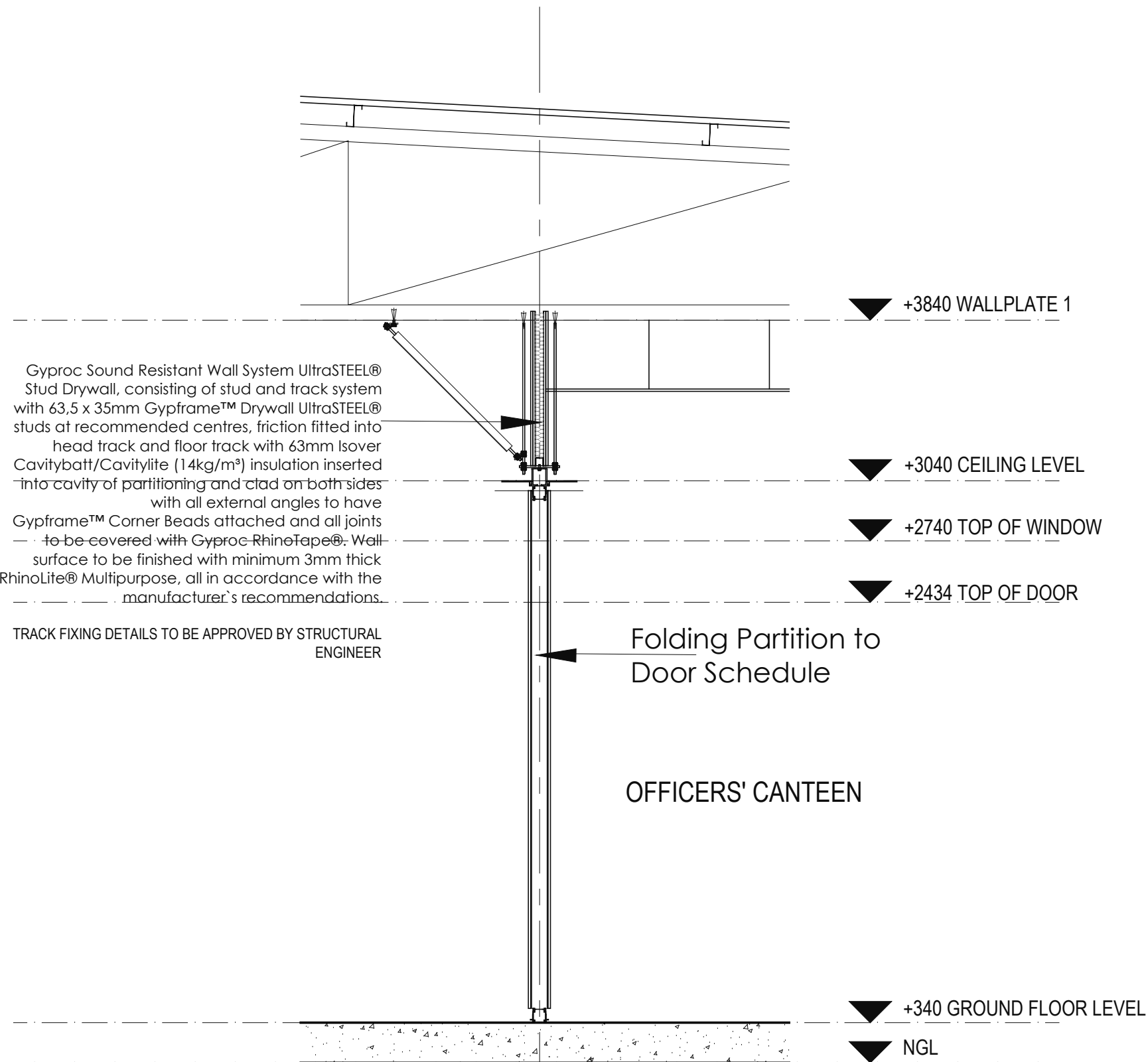


GYPROC INTERNAL WT-09  
FLOOR PLAN  
1:50



GYPROC INTERNAL WT-09  
ELEVATION  
1:50



GYPROC INTERNAL WT-09 SECTION  
1:25

GENERAL NOTES:

1. NO DIMENSIONS TO BE SCALED.
2. DIMENSIONS TO BE VERIFIED ON SITE BEFORE COMMENCING ANY SITE WORK OR SHOP DRAWINGS.
3. DIMENSIONS ARE TAKEN TO CENTRE LINES OR STRUCTURAL SURFACES AND DO NOT INCLUDE FINISHES EXCEPT WHERE OTHERWISE STATED.
4. THE ARCHITECT IS TO BE NOTIFIED OF ANY DISCREPANCIES BETWEEN THIS DRAWING AND ANY OTHER DRAWING OR CONSTRUCTION DOCUMENTS INCLUDING THOSE ISSUED BY CONSULTANTS AND NOMINATED SUB-CONTRACTORS BEFORE COMMENCING WORK.
5. MINIMUM STRENGTH POB CONCRETE 21Mpa

ISSUED FOR  
MEASUREMENT  
PURPOSES

A ISSUED FOR STAGE 3 COORDINATION 07.03.2022

REV. DESCRIPTION DATE

CLIENT



SOUTHERN AFRICAN  
DEVELOPMENT COMMUNITY

JOB TITLE  
SADC STANDBY FORCE REGIONAL  
LOGISTICS DEPOT, AT RASESA,  
GABORONE, BOTSWANA.

DWG TITLE  
INTERNAL WALL TYPE  
DRAWINGS

SCALE AS SHOWN JOB No. G649  
DATE MARCH 2022 DRAWN BY KT  
REV. A CHECKED BY AM

Project Team:  
Architect FMA Architects  
Quantity Surveyor Turner & Townsend (Pty) Ltd.  
Electrical Engineers G4 Consulting Engineers (Pty) Ltd.  
Mechanical Engineers G4 Consulting Engineers (Pty) Ltd.  
Civil Engineers Botshaka Barron Botswana (Pty) Ltd.  
Structural Engineers Botshaka Barron Botswana (Pty) Ltd.

FMA FMA ARCHITECTS (PTY) LTD.  
P.O. BOX 201504 BONTLENG  
GABORONE, BOTSWANA.  
TEL: 3959812/3 FAX: 3959814  
E-MAIL: fmagabs@info.bw

DRWG. No. SADC/ARCH/2/022/1-408